



# CELLTREAT<sup>®</sup>

SCIENTIFIC PRODUCTS



Your Source For Service, Quality And Measurable Value In Cell And Tissue Culture Products

# New Products - Spring 2012

## Serological Pipets

- **NEW!** Short Serological Pipets - shorter more compact design provides ergonomic benefit
- **NEW!** 10mL Wide Tip Serological Pipet for viscous solutions
- **NEW!** 10mL Wide Tip opening is 4x larger than standard 10mL pipet
- **NEW!** Large Volume 100mL Serological Pipet
- Bi-directional graduations are printed in bold easy-to-read black ink
- Color coded stripes and packaging enable quick volume identification
- All pipets contain a premium material filter plug
- All serological pipets are supplied sterile (gamma irradiated)



**NEW** - 100mL serological pipet



**NEW** - 10mL wide tip vs. 10mL regular tip pipet



**NEW** - 5, 10 & 25mL short pipets



**NEW** - Short & long serological pipets

Part No.	Product Description	Pack Description	Qty/Case
229201B	1mL Serological Pipet	100 Individually Wrapped/Bag	800
229202B	2mL Serological Pipet	100 Individually Wrapped/Bag	600
229205B	5mL Serological Pipet	50 Individually Wrapped/Bag	200
<b>NEW!</b> 229206B	5mL Serological Pipet, Short	50 Individually Wrapped/Bag	200
229210B	10mL Serological Pipet	50 Individually Wrapped/Bag	200
<b>NEW!</b> 229211B	10mL Serological Pipet, Short	50 Individually Wrapped/Bag	200
<b>NEW!</b> 229212B	10mL Serological Pipet, Wide Tip	50 Individually Wrapped/Bag	200
229225B	25mL Serological Pipet, Longer Length, with -10mL graduations	50 Individually Wrapped/Bag	200
<b>NEW!</b> 229226B	25mL Serological Pipet, Short	25 Individually Wrapped/Bag	100
229230B	50mL Serological Pipet	30 Individually Wrapped/Bag	90
<b>NEW!</b> 229220B	100mL Serological Pipet	10 Individually Wrapped/Bag	50

## Plasteur™ Plastic Pasteur Pipet



NEW - 150 & 230mm Plasteur™

Plasteur™ Pipet in use

- **NEW!** 230mm length now available for easier handling and longer reach for working with larger vessels
- Plasteur™ plastic pasteur pipet offers the aspirating precision of a glass pipet and the safety benefits of plastic
- Economical alternative to glass
- Sterilized (gamma irradiated) in the package so autoclaving is not necessary
- Available individually wrapped or bulk packed

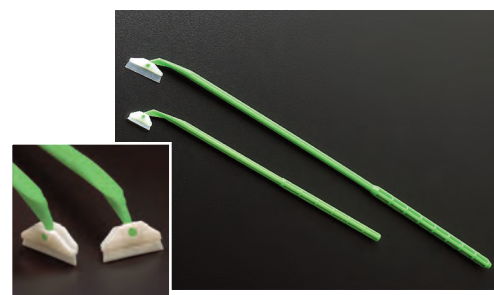
Part No.	Product Description	Pack Description	Qty/Case
229270	Plasteur™ Plastic Pasteur Pipet, 150mm Length (6 inch), Individually Wrapped	1/Wrap, 50/Bag	200
229275	Plasteur™ Plastic Pasteur Pipet, 150mm Length (6 inch), Bulk Packed	25/Bag	500
229280	Plasteur™ Plastic Pasteur Pipet, 230mm Length (9 inch), Individually Wrapped	1/Wrap, 50/Bag	200
229285	Plasteur™ Plastic Pasteur Pipet, 230mm Length (9 inch), Bulk Packed	25/Bag	500
229279	Aspirating Bulb for use with Plasteur™ Pipet	12/Bag	12

NEW!

NEW!

## Cell Scrapers

- **NEW!** Longer 39cm handle with 30mm blade for improved access to larger tissue culture vessels
- Designed for harvesting cells from tissue culture flasks, dishes or bottles
- Scraper is available with blade positioned parallel to the handle (229310 & 229315) for windshield wiper like scraping or perpendicular to the handle (229311 & 229316) for use with a raking motion
- Non-pyrogenic and packaged sterile (gamma irradiated) in individual paper/poly wrappers



Scraper & lifter blade close-up

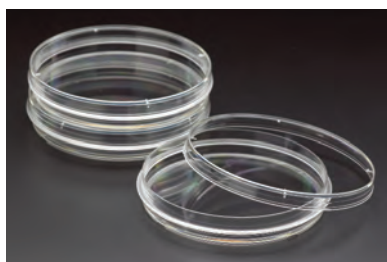
NEW - 25 & 39cm cell scrapers

Part No.	Product Description	Qty/Case
229310	Cell Scraper, 25cm Handle, 20mm "Scraper" Blade	100
229311	Cell Scraper, 25cm Handle, 20mm "Lifter" Blade	100
229315	Cell Scraper, 39cm Handle, 30mm "Scraper" Blade	100
229316	Cell Scraper, 39cm Handle, 30mm "Lifter" Blade	100

NEW!

NEW!

## Non-Treated Petri Dishes



NEW - 60mm dish with grip ring

- **NEW!** 60mm dish with grip ring for improved handling
- Surface is non-treated (hydrophobic) and does not facilitate cell attachment
- 35mm dish has offset bottom for improved handling
- 60 and 100mm dishes feature a grip ring on the base
- All dishes are supplied with lids
- Lids contain molded spacers for gas exchange
- Dishes have stacking rings for increased stability
- Packaged sterile (gamma irradiated)

Part No.	Product Description	Qty/Case
229638	35mm x 15mm Non-Treated Petri Dish	960
229663	60mm x 15mm Non-Treated Petri Dish w/Grip Ring	500
229693	100mm x 15mm Non-Treated Petri Dish w/Grip Ring	500

NEW!

For additional information on the New CELLTREAT Products listed here, or to request samples or pricing, please call 978.425.6155 or email [service@celltreat.com](mailto:service@celltreat.com).

# CELLTREAT® Scientific Products

The CELLTREAT® Scientific Products team understands that quality, innovation and cost are important to our customers. The entire organization is dedicated to providing quality cell culture and liquid handling products, exceptional customer service and measurable value to the scientific research community.

We believe that innovation is a critical component to providing exceptional customer service. Whether it is building new features into a product, customizing packaging for a special application or working with distribution partners to ensure stock and delivery status, our aim is to exceed expectations. We welcome suggestions for new products or product improvements and we strive to bring new products to market quickly without sacrificing quality, at a price that represents a real value. In this brochure alone, you will find over 35 new or improved products that have been introduced as the result of input from our customers and distribution partners.

## CELLTREAT® Product Line

Aspirating Pipets.....	10	Multiple Well Plates.....	14
Bio-Reaction Tubes.....	5	Non-Treated Petri Dishes.....	12
Bottle Top Filters.....	9	Non-Treated Suspension Culture Flasks.....	4
Cell Scrapers.....	3	Plasteur™ Plastic Pasteur Pipets.....	10
Centrifuge Tubes.....	7	Reagent Reservoirs.....	13
Erlenmeyer & Fernbach Flasks.....	5	Roller Bottles.....	4
Filter Systems.....	9	Serological Pipets.....	11
Flask Caps.....	2	Solution Bottles.....	9
Flip-Top Centrifuge Tubes.....	6	Syringe Filters.....	8
Inoculating Loops & Needles.....	12	Tissue Culture Treated Dishes.....	13
Large Volume Centrifuge Tubes.....	4	Tissue Culture Treated Flasks.....	3
Markers.....	6	3D Cell Culture Plates.....	15
Micro Volume Centrifuge Tubes.....	6	Celltreat® Guarantee.....	16

## Flask Caps

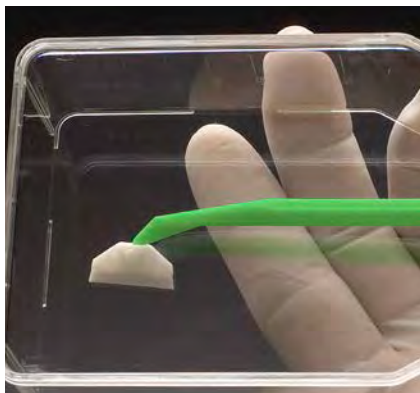
- Caps for tissue culture and suspension culture flasks
- Solid or vent cap, 5 per bag
- Vent caps feature 0.22µm hydrophobic membrane for gas exchange
- Packaged sterile (gamma irradiated)

CELLTREAT® Flask Caps		
Part No.	Product Description	Qty/Case
229392	Flask Cap, Plug Seal, Small (fits 12.5 & 25cm <sup>2</sup> , 25 & 50mL)	5
229393	Flask Cap, Vent, Small (fits 12.5 & 25cm <sup>2</sup> , 25 & 50mL)	5
229394	Flask Cap, Plug Seal, Large (fits 75 & 182cm <sup>2</sup> , 250 & 600mL)	5
229395	Flask Cap, Vent, Large (fits 75 & 182cm <sup>2</sup> , 250 & 600mL)	5



## NEW Cell Scrapers

CELLTREAT® Cell Scrapers are designed for harvesting cells from tissue culture flasks, dishes or bottles. The handle is 25cm in length and the flexible blade is 20mm in width. The scraper is available with the blade positioned parallel to the handle (229310) for windshield wiper like scraping or perpendicular to the handle (229311) for use with a raking motion. Cell scrapers are non-pyrogenic and packaged sterile (gamma irradiated) in individual paper/poly wrappers with 100 pieces per case.



“Scraper” Part No. 229310



“Lifter” Part No. 229311



### CELLTREAT® Cell Scrapers

Part No.	Product Description	Qty/Case
229310	Cell Scraper, 25cm Handle, 20mm “Scraper” Blade	100
229311	Cell Scraper, 25cm Handle, 20mm “Lifter” Blade	100

## Tissue Culture Treated Flasks

- Vacuum gas plasma tissue culture treated
- Uniform hydrophilic surface is ideal for consistent cell attachment
- Available in four sizes: 12.5, 25, 75 and 182cm<sup>2</sup>
- Available with plug seal or vent caps (0.22µm hydrophobic membrane)
- Canted neck design for easy access
- Packaged sterile (gamma irradiated) in zip-closure bags



### CELLTREAT® Tissue Culture Treated Flasks

Part No.	Product Description	Flask Volume	Qty/ Pack	Qty/ Case
229320	12.5cm <sup>2</sup> Tissue Culture Flask - Plug Seal Cap	25mL	10	200
229330	25cm <sup>2</sup> Tissue Culture Flask - Plug Seal Cap	50mL	10	200
229340	75cm <sup>2</sup> Tissue Culture Flask - Plug Seal Cap	250mL	5	100
229350	182cm <sup>2</sup> Tissue Culture Flask - Plug Seal Cap	600mL	5	40
229321	12.5cm <sup>2</sup> Tissue Culture Flask - Vent Cap	25mL	10	200
229331	25cm <sup>2</sup> Tissue Culture Flask - Vent Cap	50mL	10	200
229341	75cm <sup>2</sup> Tissue Culture Flask - Vent Cap	250mL	5	100
229351	182cm <sup>2</sup> Tissue Culture Flask - Vent Cap	600mL	5	40

## NEW Roller Bottles

- 2000mL volume with 850cm<sup>2</sup> of surface area
- Large knurled cap for easy grip
- Vented or non-vented cap for open or closed systems
- Manufactured from USP Class VI polystyrene
- Vacuum gas plasma tissue culture treated
- Uniform, hydrophilic surface facilitates cell attachment
- Easy-to-read black printed graduations
- Bottles and caps are individually bagged with 12 bottles per case
- Packaged sterile (gamma irradiated)



### CELLTREAT® Roller Bottles

Part No.	Product Description	Pack Description	Qty/Case
229384	850cm <sup>2</sup> Roller Bottle, Non-Vented Cap	1/Bag	12
229385	850cm <sup>2</sup> Roller Bottle, Vented Cap	1/Bag	12

## Non-Treated Suspension Culture Flasks

- Suspension culture flasks are not tissue culture treated
- Hydrophobic surface does not facilitate cell attachment
- Provided with 0.22µm hydrophobic membrane vent cap to allow gas exchange
- Packaged sterile (gamma irradiated) in zip-closure bags



### CELLTREAT® Non-Treated Suspension Culture Flasks

Part No.	Product Description	Flask Volume	Qty/ Pack	Qty/ Case
229500	25mL Suspension Culture Flask - Vent Cap	25mL	10	200
229510	50mL Suspension Culture Flask - Vent Cap	50mL	10	200
229520	250mL Suspension Culture Flask - Vent Cap	250mL	5	100
229530	600mL Suspension Culture Flask - Vent Cap	600mL	5	40

## NEW Large Volume Centrifuge Tubes

- Large volume conical centrifuge tubes available in 225mL volume
- Polyethylene cap with integral plug seal provides a secure closure
- Temperature range -80°C to 120°C
- Maximum RCF is 7,500g
- Packaged sterile (gamma irradiated) in zip-closure bags



### CELLTREAT® Large Volume Centrifuge Tubes

Part No.	Product Description	Pack Description	Qty/ Case
229465	225mL Conical Bottom Centrifuge Tube	6/Re-sealable Bag	48

## NEW Erlenmeyer & Fernbach Flasks

- Designed for suspension culture applications
- Constructed from optically clear, autoclavable polycarbonate
- 70mm opening for easy filling and dispensing
- Over-sized vent area in cap for improved gas exchange
- Fernbach flask shape increases surface area to volume ratio
- NEW – Unique 2L Fernbach now available
- Available with plain or baffled bottom
- All Erlenmeyer and Fernbach flasks are individually bagged and supplied sterile (gamma irradiated)



2L Erlenmeyer Flask, 3L Fernbach Flask, 2L Fernbach Flask

### CELLTREAT® Erlenmeyer & Fernbach Flasks

Part No.	Product Description	Max. Volume	Pack Description	Qty/ Case
229850	2L Erlenmeyer Flask, Vent Cap, Plain Bottom	2200mL	1/Bag	6
229855	2L Erlenmeyer Flask, Vent Cap, Baffled Bottom	2200mL	1/Bag	6
229860	2L Fernbach Flask, Vent Cap, Plain Bottom	2400mL	1/Bag	6
229865	2L Fernbach Flask, Vent Cap, Baffled Bottom	2400mL	1/Bag	6
229870	3L Fernbach Flask, Vent Cap, Plain Bottom	4000mL	1/Bag	4
229875	3L Fernbach Flask, Vent Cap, Baffled Bottom	4000mL	1/Bag	4
229894	Cap Only, 70mm, Erlenmeyer/Fernbach Solid Cap		1/Bag	24
229895	Cap Only, 70mm, Erlenmeyer/Fernbach Vent Cap		1/Bag	24

## NEW Bio-Reaction Tubes



Bio-Reaction tubes offer a convenient and economical option for suspension cell culture. These tubes provide an environment perfect for small scale suspension culture or biological reaction experiments that require aseptic conditions with gas exchange.

- Available in 15 and 50mL conical bottom and 50mL self-standing sizes
- Easy-to-read black graduations and a large white marking area
- Caps have an ultrasonically welded 0.22µm hydrophobic membrane to allow gas exchange
- Sterile (gamma irradiated) and packaged in zip-closure bags or foam racks

### CELLTREAT® Bio-Reaction Tubes

Part No.	Product Description	Pack Description	Qty/ Case
229471	15mL Bio-Reaction Tube - Bag	10/Re-sealable Bag	100
229472	15mL Bio-Reaction Tube - Foam Rack	50/Foam Rack	300
229475	50mL Bio-Reaction Tube - Bag	10/Re-sealable Bag	100
229476	50mL Bio-Reaction Tube - Foam Rack	25/Foam Rack	300
229479	50mL Self-Standing Bio-Reaction Tube - Bag	10/Re-sealable Bag	100
229473	Cap Only, Vented, Fits 15mL Bio-Reaction Tube - Bag	25/Re-sealable Bag	100
229477	Cap Only, Vented, Fits 50mL Bio-Reaction Tube - Bag	25/Re-sealable Bag	100



Vented Cap

# Flip-Top Centrifuge Tubes

- Ergonomic flip-top cap is designed for single handed operation
- Temperature range is -80°C to 120°C
- Maximum RCF is 9,400g
- Packaged sterile (gamma irradiated) in zip-closure bags or recyclable paperboard racks



## CELLTREAT® Flip-Top Centrifuge Tubes

Part No.	Product Description	Pack Description	Qty/Case
229416	15mL Centrifuge Tube, Flip-Top Cap - Paperboard Rack	25/Rack - 2 Racks/Bag	500
229417	15mL Centrifuge Tube, Flip-Top Cap - Bag	25/Re-sealable Bag	500
229426	50mL Centrifuge Tube, Flip-Top Cap - Paperboard Rack	25/Rack - 1 Rack/Bag	500
229427	50mL Centrifuge Tube, Flip-Top Cap - Bag	25/Re-sealable Bag	500

# Micro Volume Centrifuge Tubes



- Conical bottom available in three sizes: 0.5, 1.5 and 2.0mL
- NEW - Now available in a 2mL conical bottom, self-standing version
- All tubes have a frosted marking spot and engraved graduations
- Attached flat top cap is easy to open and close with one hand
- Temperature range of -80°C to 120°C
- Manufactured from high quality polypropelene
- Max Force RCF is 16,000g

## CELLTREAT® Micro Volume Centrifuge Tubes

Part No.	Product Description	Pack Description	Sterile (Y/N)	Qty/Pack	Qty/Case
229440	0.5mL Micro Centrifuge Tube	1000/Re-sealable Bag	Y	1000	5000
229443	1.5mL Micro Centrifuge Tube	1000/Re-sealable Bag	Y	1000	5000
229446	2.0mL Micro Centrifuge Tube	1000/Re-sealable Bag	Y	1000	5000
229448	2.0mL Micro Centrifuge Tube, Self-Standing	500/Re-sealable Bag	N	500	5000

# Markers

- Fast drying, smudge resistant, extra-fine point marker
- Ideal for permanently marking all plastic labware especially centrifuge tubes
- Packaged 5 per re-sealable bag



## CELLTREAT® Markers

Part No.	Product Description	Qty/Case
229405	Green Tube Marker, Fast Drying Green Ink	5
229406	Blue Tube Marker, Fast Drying Blue Ink	5
229407	Black Tube Marker, Fast Drying Black Ink	5
229408	Red Tube Marker, Fast Drying Red Ink	5



# Centrifuge Tubes

- Graduations are printed in bold easy-to-read black ink and are accurate to  $\pm 2\%$
- 50mL tubes include a black printed 50mL graduation line and 1, 2 and 3mL graduations molded into the conical bottom
- Large white marking area provides excellent contrast for identification
- All tubes have smooth, flat surface polyethylene caps
- Maximum RCF is 12,000g for conical bottom tubes and 6,000g for self-standing tubes
- Temperature range is  $-80^{\circ}\text{C}$  to  $120^{\circ}\text{C}$
- 15 and 50mL tubes are available in recyclable racks or bulk packaged in zip-closure bags
- Centrifuge tubes are available in sterile or non-sterile pack options



Foam or Paperboard Racks



Bulk Re-sealable Bags



Self-Standing Centrifuge Tubes



Printed and Molded Graduations



Base of Self-Standing Centrifuge Tubes

## CELLTREAT® Centrifuge Tubes

Part No.	Product Description	Pack Description	Sterile (Y/N)	Max Force (RCF) g	Qty/Case
229410	15mL Centrifuge Tube	25/Paperboard Rack with 2 Racks/Bag	Y	12000	500
229411	15mL Centrifuge Tube	25/Re-sealable Bag	Y	12000	500
229412	15mL Centrifuge Tube	50/Foam Rack	Y	12000	300
229420	50mL Centrifuge Tube	25/Paperboard Rack with 1 Rack/Bag	Y	12000	500
229421	50mL Centrifuge Tube	25/Re-sealable Bag	Y	12000	500
229422	50mL Centrifuge Tube	25/Foam Rack	Y	12000	300

## CELLTREAT® Self-Standing Centrifuge Tubes

Part No.	Product Description	Pack Description	Sterile (Y/N)	Max Force (RCF) g	Qty/Case
229430	50mL Self-Standing Centrifuge Tube	25/Re-sealable Bag	Y	6000	500

## CELLTREAT® Non-Sterile Centrifuge Tubes

Part No.	Product Description	Pack Description	Sterile (Y/N)	Max Force (RCF) g	Qty/Case
229450	15mL Centrifuge Tube Only	500/Bag	N	12000	500
229451	15mL Caps Only	500/Bag	N		500
229452	15mL Tubes & Caps Packed Separately	Tubes 500/Bag & Caps 500/Bag	N	12000	500
229453	50mL Caps Only	500/Bag	N		500
229454	50mL Tube Only	500/Bag	N	12000	500
229455	50mL Centrifuge Tube Rack	25/Paperboard Rack	N	12000	500
229456	50mL Tubes & Caps Packed Separately	Tubes 500/Bag & Caps 500/Bag	N	12000	500

# Syringe Filters

- Available in a variety of membrane types, porosities and diameters
- Color coded for easy identification
- All syringe filters have luer-lock connections with polypropylene housings
- Filters are molded in the housings, providing a reliable seal without the use of adhesives
- Individually packed in peel-to-open paper/plastic blister packs
- Supplied sterile (gamma irradiated)



**PES** — Low affinity for proteins and extractables

- Faster flow rate than PVDF
- For pre-filtration and filtration of buffers and culture media



**PVDF** — Low protein-binding for filtration of non-aggressive aqueous and mild organic solutions

- For maximizing protein recovery
- High temperature filtration



**MCE** — Filtration of aqueous solutions

- Effectively binds trace proteins
- Oil particulates and bacteria filtration



**NYLON** — Universal application for analytical procedures

- Chemical filtration
- Beverage filtration



**PTFE** — Hydrophobic membrane has great temperature resistance

- For degassing/clarifying aqueous samples
- Strong acid solvent filtration
- Alkali solvent filtration

## CELLTREAT® Syringe Filters

Part No.	Product Description	Color	Membrane Pore Size	Membrane Diameter	Membrane Material	Qty/Case
229746	Syringe Filter, PES, 0.22µm, 13mm Diameter	Green	0.22µm	13mm	PES	75
229747	Syringe Filter, PES, 0.22µm, 30mm Diameter	Green	0.22µm	30mm	PES	30
229748	Syringe Filter, PES, 0.45µm, 13mm Diameter	Green	0.45µm	13mm	PES	75
229749	Syringe Filter, PES, 0.45µm, 30mm Diameter	Green	0.45µm	30mm	PES	30
229740	Syringe Filter, PVDF 0.10µm, 13mm Diameter	Blue	0.10µm	13mm	PVDF	75
229741	Syringe Filter, PVDF 0.10µm, 30mm Diameter	Blue	0.10µm	30mm	PVDF	30
229742	Syringe Filter, PVDF 0.22µm, 13mm Diameter	Blue	0.22µm	13mm	PVDF	75
229743	Syringe Filter, PVDF 0.22µm, 30mm Diameter	Blue	0.22µm	30mm	PVDF	30
229744	Syringe Filter, PVDF 0.45µm, 13mm Diameter	Blue	0.45µm	13mm	PVDF	75
229745	Syringe Filter, PVDF 0.45µm, 30mm Diameter	Blue	0.45µm	30mm	PVDF	30
229750	Syringe Filter, MCE, 0.22µm, 13mm Diameter	Yellow	0.22µm	13mm	MCE	75
229751	Syringe Filter, MCE, 0.22µm, 30mm Diameter	Yellow	0.22µm	30mm	MCE	30
229752	Syringe Filter, MCE, 0.45µm, 13mm Diameter	Yellow	0.45µm	13mm	MCE	75
229753	Syringe Filter, MCE, 0.45µm, 30mm Diameter	Yellow	0.45µm	30mm	MCE	30
229754	Syringe Filter, Nylon, 0.45µm, 13mm Diameter	Pink	0.45µm	13mm	Nylon	75
229755	Syringe Filter, Nylon, 0.45µm, 30mm Diameter	Pink	0.45µm	30mm	Nylon	30
229756	Syringe Filter, PTFE, 0.22µm, 13mm Diameter	White	0.22µm	13mm	PTFE	75
229757	Syringe Filter, PTFE, 0.22µm, 30mm Diameter	White	0.22µm	30mm	PTFE	30
229758	Syringe Filter, PTFE, 0.45µm, 13mm Diameter	White	0.45µm	13mm	PTFE	75
229759	Syringe Filter, PTFE, 0.45µm, 30mm Diameter	White	0.45µm	30mm	PTFE	30

# Filter Systems & Bottle Top Filters

- Polyethersulfone (PES) membrane for high flow and low binding
- Two membrane pore sizes: 0.22 or 0.45µm
- Four volumes: 125, 250, 500 and 1,000mL
- Filter systems include bottle top filter and solution bottle
- Bottle top filters fit on CELLTREAT® solution bottles or other standard threaded solution storage bottles
- Bottle top filters do not include solution bottle
- Packaged sterile (gamma irradiated) in bags



## CELLTREAT® Filter Systems

Part No.	Product Description	Filter Pore Size	Filter Diameter	Pack Description	Qty/Case
229705	150mL Filter System, PES Filter Material	0.22µm	50mm	1/Bag	12
229706	250mL Filter System, PES Filter Material	0.22µm	50mm	1/Bag	12
229707	500mL Filter System, PES Filter Material	0.22µm	75mm	1/Bag	12
229708	1000mL Filter System, PES Filter Material	0.22µm	90mm	1/Bag	12
229701	150mL Filter System, PES Filter Material	0.45µm	50mm	1/Bag	12
229702	250mL Filter System, PES Filter Material	0.45µm	50mm	1/Bag	12
229703	500mL Filter System, PES Filter Material	0.45µm	75mm	1/Bag	12
229704	1000mL Filter System, PES Filter Material	0.45µm	90mm	1/Bag	12

## CELLTREAT® Bottle Top Filters

Part No.	Product Description	Filter Pore Size	Filter Diameter	Pack Description	Qty/Case
229715	150mL Bottle Top Filter, PES Filter Material	0.22µm	50mm	1/Bag	24
229716	250mL Bottle Top Filter, PES Filter Material	0.22µm	50mm	1/Bag	24
229717	500mL Bottle Top Filter, PES Filter Material	0.22µm	75mm	1/Bag	24
229718	1000mL Bottle Top Filter, PES Filter Material	0.22µm	90mm	1/Bag	24
229711	150mL Bottle Top Filter, PES Filter Material	0.45µm	50mm	1/Bag	24
229712	250mL Bottle Top Filter, PES Filter Material	0.45µm	50mm	1/Bag	24
229713	500mL Bottle Top Filter, PES Filter Material	0.45µm	75mm	1/Bag	24
229714	1000mL Bottle Top Filter, PES Filter Material	0.45µm	90mm	1/Bag	24

# Solution Bottles

- Compatible with bottle top filters or for use as solution storage containers
- Polystyrene bottles are packaged sterile (gamma irradiated) in bags

## CELLTREAT® Solution Bottles

Part No.	Product Description	Working Volume	Pack Description	Qty/Case
229781	150mL Solution Bottle	150mL	1/Bag	24
229782	250mL Solution Bottle	250mL	1/Bag	24
229784	500mL Solution Bottle	500mL	1/Bag	24
229785	1000mL Solution Bottle	1000mL	1/Bag	24



# NEW Plasteur™ Plastic Pasteur Pipets

The new CELLTREAT® Scientific Products Plasteur™ plastic pasteur pipet offers the aspirating precision of a glass pipet and the safety benefits of plastic. The Plasteur pipet is an economical alternative to glass and is sterilized (gamma irradiated) in the package so autoclaving is not necessary.



Plasteur™ pipet individually wrapped packaging



Plasteur™ pipet – fine tip for precision aspirating

## CELLTREAT® Plasteur™ Plastic Pasteur Pipets

Part No.	Product Description	Pack Description	Qty/ Case
229270	Plasteur™ Plastic Pasteur Pipet, Individually Wrapped, Packed in Bags	1/Wrap, 50/Bag	200
229275	Plasteur™ Plastic Pasteur Pipet, Bulk Packed in Bags	25/Bag	500
229279	Aspirating Bulb for use with Plasteur™ Pipet	12/Bag	12

# Aspirating Pipets



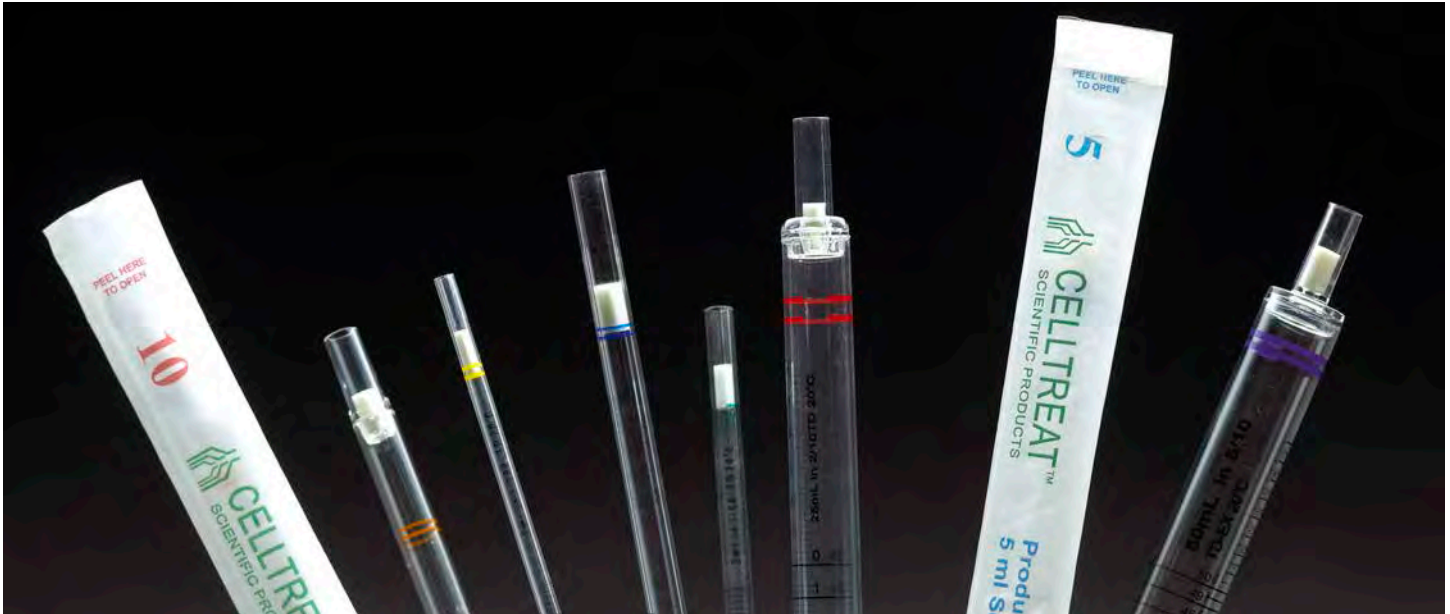
- Disposable Aspirating Pipets are manufactured from USP Class VI polystyrene
- Available in three sizes: 1, 2, and 5mL
- Supplied without graduations or plugs
- Available individually wrapped in bags or bulk packed
- All aspirating pipets are supplied sterile (gamma irradiated)

## CELLTREAT® Aspirating Pipets

Part No.	Product Description	Pack Description	Qty/Case
229261	1mL Aspirating Pipet	100 Individually Wrapped/Bag	400
229262	2mL Aspirating Pipet	100 Individually Wrapped/Bag	400
229265	5mL Aspirating Pipet	50 Individually Wrapped/Bag	200
229251	1mL Aspirating Pipet	50 Bulk Packed/Bag	400
229252	2mL Aspirating Pipet	50 Bulk Packed/Bag	400
229255	5mL Aspirating Pipet	25 Bulk Packed/Bag	200

# Serological Pipets

- Bi-directional graduations are printed in bold easy-to-read black ink
- Calibrated “To Deliver” (TD) for accurate dispensing to within  $\pm 2\%$
- Color coded stripes and packaging enable quick volume identification
- All pipets contain a premium material filter plug
- Individually wrapped pipets are available in economical bags or shelf packs that facilitate dispensing through a perforated end panel
- Bulk packed pipets are also available in all sizes
- All serological pipets are supplied sterile (gamma irradiated)



## CELLTREAT® Serological Pipets Individually Wrapped in Bags

Part No.	Product Description	Pack Description	Qty/Case
229201B	1mL Serological Pipet	100 Individually Wrapped/Bag	800
229202B	2mL Serological Pipet	100 Individually Wrapped/Bag	600
229205B	5mL Serological Pipet	50 Individually Wrapped/Bag	200
229210B	10mL Serological Pipet	50 Individually Wrapped/Bag	200
229225B	25mL Serological Pipet	50 Individually Wrapped/Bag	200
229230B	50mL Serological Pipet	30 Individually Wrapped/Bag	90



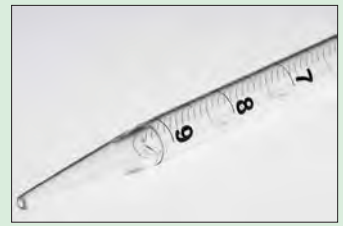
## CELLTREAT® Serological Pipets Individually Wrapped in Dispenser Cartons

Part No.	Product Description	Pack Description	Qty/Case
229201	1mL Serological Pipet	200 Individually Wrapped/Dispenser Carton	800
229202	2mL Serological Pipet	150 Individually Wrapped/Dispenser Carton	600
229205	5mL Serological Pipet	100 Individually Wrapped/Dispenser Carton	200
229210	10mL Serological Pipet	100 Individually Wrapped/Dispenser Carton	200
229225	25mL Serological Pipet	50 Individually Wrapped/Dispenser Carton	200
229230	50mL Serological Pipet	45 Individually Wrapped/Dispenser Carton	90



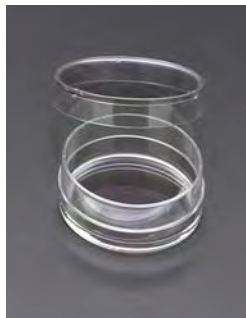
## CELLTREAT® Serological Pipets Bulk Packed in Bags

Part No.	Product Description	Pack Description	Qty/Case
229231	1mL Serological Pipet	50 Bulk Packed/Bag	1000
229232	2mL Serological Pipet	50 Bulk Packed/Bag	800
229235	5mL Serological Pipet	25 Bulk Packed/Bag	500
229240	10mL Serological Pipet	25 Bulk Packed/Bag	500
229245	25mL Serological Pipet	25 Bulk Packed/Bag	200
229250	50mL Serological Pipet	25 Bulk Packed/Bag	200



# Non-Treated Petri Dishes

- Petri dishes are not tissue culture treated
- Surface is hydrophobic and does not facilitate cell attachment
- Available in two diameters: 35 and 100mm
- 35mm dish has offset bottom for improved handling
- 100mm dish features a grip ring on the base
- All dishes are supplied with lids
- Lids contain molded spacers for gas exchange
- Dishes have stacking rings for increased stability
- Packaged sterile (gamma irradiated) in zip-closure bags



35mm with enhanced gripping area



100mm dish with grip ring

## CELLTREAT® Non-Treated Petri Dishes

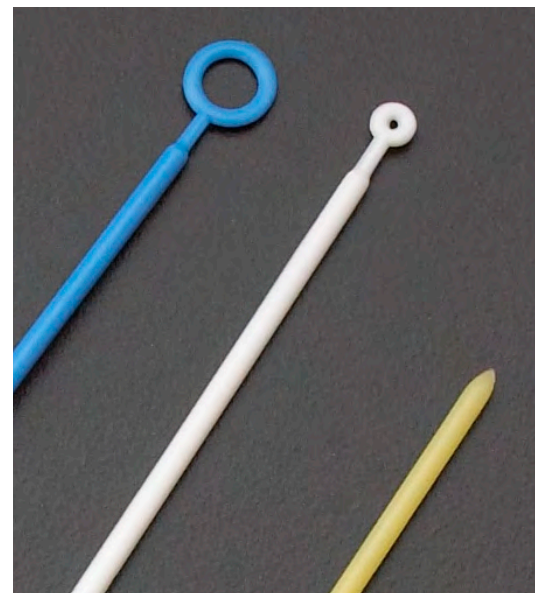
Part No.	Product Description	Working Volume	Growth Area	Pack Description	Qty/Case
229638	35mm x 15mm Non-Treated Petri Dish	5mL	8.5cm <sup>2</sup>	10/Bag	960
229693	100mm x 15mm Non-Treated Petri Dish w/Grip Ring	15-16mL	55cm <sup>2</sup>	10/Bag	500

# Inoculating Loops and Needles

- Made from vacuum gas plasma treated high quality polypropylene
- Available in 3 styles: needle, 1µL loop and 10µL loop
- Flexible for easy access to small volume tubes and dishes
- Color-coded for easy identification
- Packaged sterile (gamma irradiated) in individual or bulk (20 piece) easy-to-open paper/plastic wrappers



Packaging options



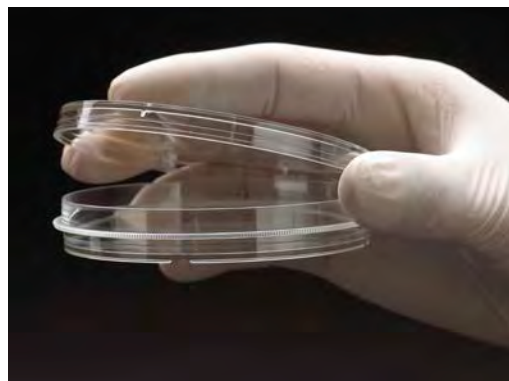
Loops and Needle

## CELLTREAT® Inoculating Loops and Needles

Part No.	Product Description	Color	Length	Pack Description	Qty/Case
229601	1µl Inoculating Loop, Bulk Pack	White	218mm	20/Pack	2000
229602	1µl Inoculating Loop, Individual Pack	White	218mm	1/Pack	600
229610	10µl Inoculating Loop, Bulk Pack	Blue	221mm	20/Pack	2000
229612	10µl Inoculating Loop, Individual Pack	Blue	221mm	1/Pack	600
229615	Inoculating Needle, Bulk Pack	Yellow	221mm	20/Pack	2000

# Tissue Culture Treated Dishes

- Vacuum gas plasma treated for a consistent hydrophilic cell attachment surface
- Available in five diameters and two heights
- All dishes are supplied with lids
- Lids contain molded spacers to allow gas exchange and stacking rings for increased stability
- 35mm dish has offset bottom for improved handling
- 60, 70 and 100mm dishes have a pronounced grip ring for improved handling
- All dishes are supplied sterile (gamma irradiated)



## CELLTREAT® Tissue Culture Treated Dishes

Part No.	Product Description	Working Volume	Growth Area	Pack Description	Qty/Case
229635	35mm x 15mm Tissue Culture Treated Dishes	5mL	8.5cm <sup>2</sup>	10/Re-sealable Bag	500
229660	60mm x 15mm Tissue Culture Treated Dishes w/Grip Ring	7-8mL	21cm <sup>2</sup>	10/Re-sealable Bag	500
229670	70mm x 15mm Tissue Culture Treated Dishes w/Grip Ring	7-8mL	36.3cm <sup>2</sup>	10/Re-sealable Bag	500
229690	100mm x 15mm Tissue Culture Treated Dishes w/Grip Ring	15-16mL	55cm <sup>2</sup>	10/Re-sealable Bag	500
229620	100mm x 20mm Tissue Culture Treated Dishes w/Grip Ring	15-16mL	60.5cm <sup>2</sup>	10/Re-sealable Bag	300
229650	150mm x 15mm Tissue Culture Treated Dishes	25-28mL	143cm <sup>2</sup>	1/Bag	60
229651	150mm x 15mm Tissue Culture Treated Dishes	25-28mL	143cm <sup>2</sup>	5/Re-sealable Bag	100

## NEW Reagent Reservoirs

- Reagent reservoirs are designed to assist in repetitive liquid transfer with multi-channel pipettors
- White color for solution visibility
- V-shaped to reduce waste
- Packaged sterile (gamma irradiated) with 1 or 5 pieces per bag

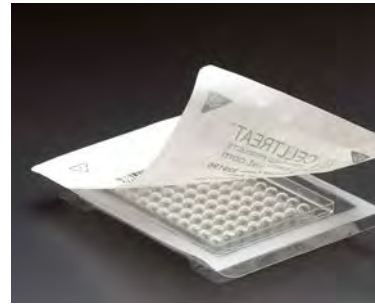


## CELLTREAT® Reagent Reservoirs

Part No.	Product Description	Color	Pack Description	Qty/Case
229290	50mL Reagent Reservoir - Individual Pack	White	1/Bag	80
229291	50mL Reagent Reservoir - Bulk Pack	White	5/Bag	200

# Multiple Well Plates

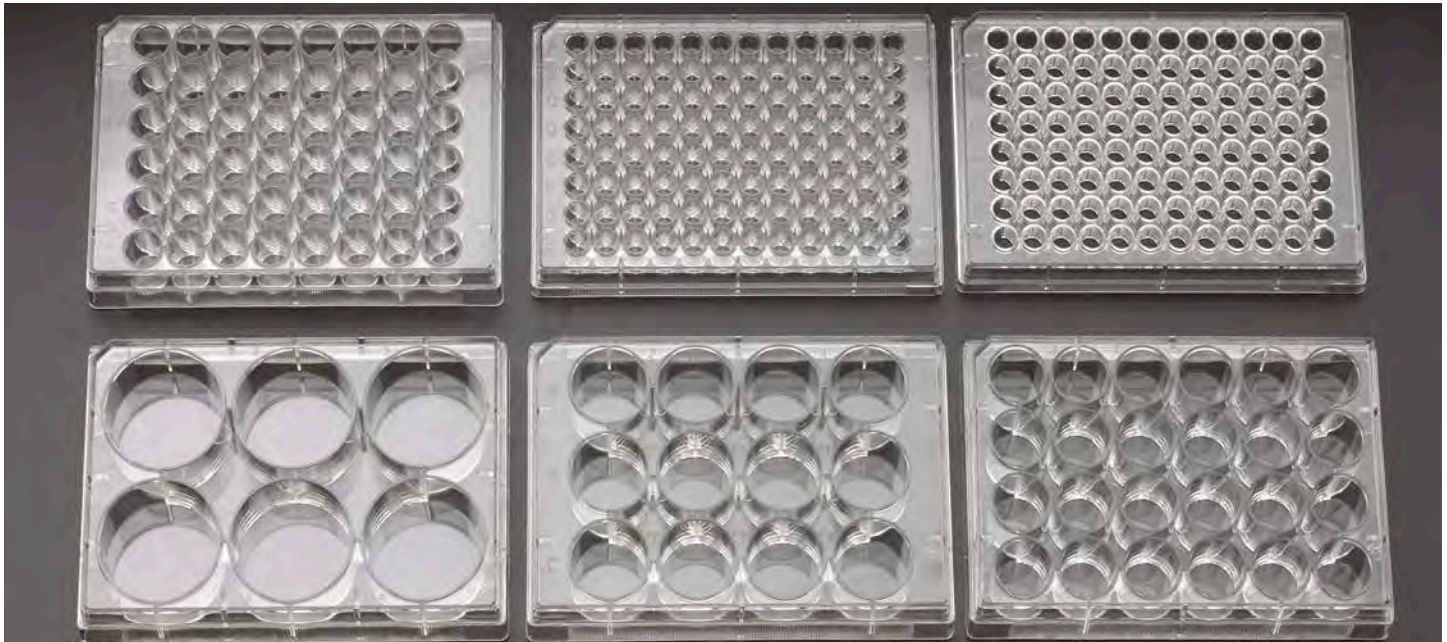
- Available in 6, 12, 24, 48 and 96 well flat bottom configurations
- **NEW** — 96 well plates now available with a round bottom
- Plates are labeled with alpha-numeric markings for easy identification of individual wells
- Each well has a raised rim which nests into the rings on the single direction lid to reduce evaporation and limit the risk of cross contamination
- Lids have a stacking ring for added stability when handling tall stacks of plates
- All multiple well plates are packaged sterile (gamma irradiated)



Individual, easy to open pack



NEW! Round bottom



## CELLTREAT® Multiple Well Plates - Tissue Culture Treated

Part No.	Product Description	Cell Growth Area	Pack Description	Qty/ Pack	Qty/ Case
229106	6 Well Tissue Culture Plate with Lid	9.60cm <sup>2</sup>	Individual	50	100
229112	12 Well Tissue Culture Plate with Lid	3.85cm <sup>2</sup>	Individual	50	100
229124	24 Well Tissue Culture Plate with Lid	1.93cm <sup>2</sup>	Individual	50	100
229148	48 Well Tissue Culture Plate with Lid	0.84cm <sup>2</sup>	Individual	50	100
229196	96 Well Tissue Culture Plate with Lid	0.33cm <sup>2</sup>	Individual	50	100
229197	96 Well Tissue Culture Plate with Lid	0.33cm <sup>2</sup>	5/Sleeve	5	100
229190	96 Well Tissue Culture Plate, Round Bottom with Lid	0.33cm <sup>2</sup>	Individual	50	100

## CELLTREAT® Multiple Well Plates - Non-Treated

Part No.	Product Description	Cell Growth Area	Pack Description	Qty/ Pack	Qty/ Case
229506	6 Well Non-treated Plate with Lid	2 - 8mL	Individual	50	100
229512	12 Well Non-treated Plate with Lid	2 - 4mL	Individual	50	100
229524	24 Well Non-treated Plate with Lid	0.5 - 1.5mL	Individual	50	100
229548	48 Well Non-treated Plate with Lid	0.3 - 1mL	Individual	50	100
229596	96 Well Non-treated Plate with Lid	50 - 300µL	Individual	50	100
229592	96 Well Non-treated Plate without Lid	50 - 300µL	Individual	50	100
229590	96 Well Non-treated Plate, Round Bottom with Lid	50 - 300µL	Individual	50	100
229591	96 Well Non-treated Plate, Round Bottom without Lid	50 - 300µL	Individual	50	100



# 3D Cell Culture Plates

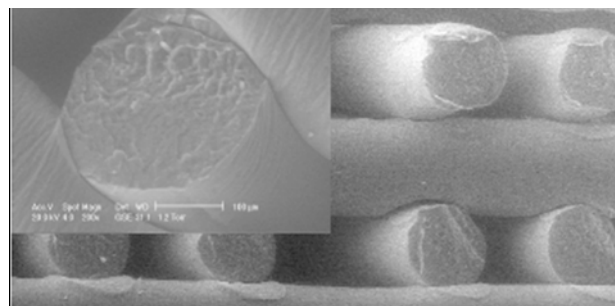
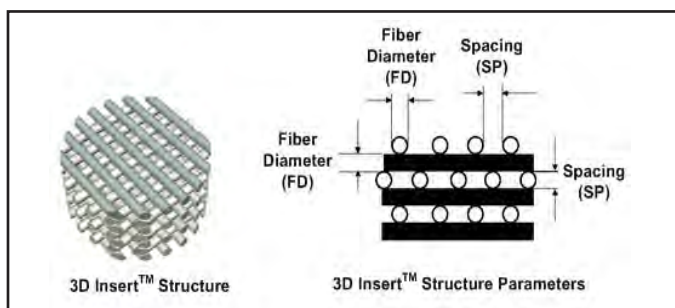
CELLTREAT® Scientific Products has partnered with 3D Biotek, LLC to manufacture and supply multiple well cell culture plates with 3D Inserts™ for three dimensional cell and tissue culture.

Porous polymer scaffolds engineered using 3D Biotek's proprietary precision microfabrication technology create a three dimensional cell culture environment more closely resembling in vivo cell growth conditions.

Struts of each layer of the scaffolds are oriented 90° relative to the struts of the layer immediately below.

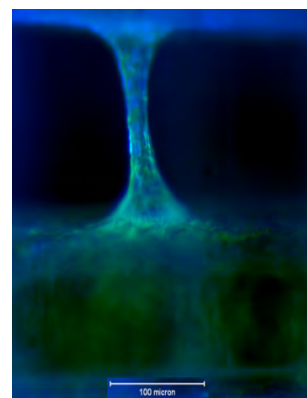
3D Insert™ technology provides a three dimensional cell culture environment with a total cell growth area that is significantly greater than that of a traditional 2D tissue culture platform for greater yields.

Three dimensional 3D Insert™ scaffolds are available in polycaprolactone (PCL) and polystyrene (PS) polymers.

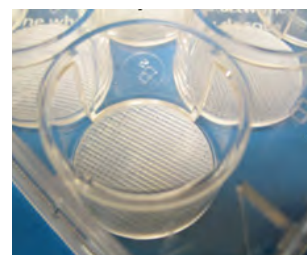


## Unique features of 3D Cell Culture Plates:

- Convenient to use - The products are sterile and ready to use, no further preparation is needed. Seeding protocols are very similar to 2D cell culture techniques.
- 100% open porosity - The pores of the product are 100% open. Therefore, cells can be seeded easily and the nutrient and metabolic waste can be exchanged easily, particularly useful in dynamic cultures.
- Compatible with trypsin digestion protocol - 3D cells can be easily harvested using the same trypsin digestion protocol as in 2D cell culture.
- Easy separation of cytokines and growth factors secreted by cultured cells - Unlike gel matrix, the 3D cell culture scaffold will not absorb cytokines or growth factors secreted by cultured cells during 3D culture and can be easily separated from culture medium.



3D Polystyrene (PS) Cell Culture Evaluation Plates			
Part No.	Product Description	Fiber Diameter	Fiber Spacing
212041520	12-Well Sterile 3D Cell Culture Plate with 4-3D Polystyrene (PS) Scaffolds	~150µm	~200µm
296121520	96-Well Sterile 3D Cell Culture Plate with 12-3D Polystyrene (PS) Scaffolds	~150µm	~200µm
3D Polycaprolactone (PCL) Cell Culture Evaluation Plates			
Part No.	Product Description	Fiber Diameter	Fiber Spacing
312043030	12-Well Sterile 3D Cell Culture Plate with 4-3D Polycaprolactone (PCL) Scaffolds	~300µm	~300µm
396123030	96-Well Sterile 3D Cell Culture Plate with 12-3D Polycaprolactone (PCL) Scaffolds	~300µm	~300µm



3D Cell Culture structures are available in a wide assortment of configurations. For information on additional products, please email [service@celltreat.com](mailto:service@celltreat.com) or call 1-877-345-4620.

# CELLTREAT® Customer Focus

## Quality



All CELLTREAT® Scientific Products are manufactured in a class 100,000 clean room from USP Class VI materials in accordance with ISO 9001:2008/ISO 13485:2003 quality management systems.

## Features



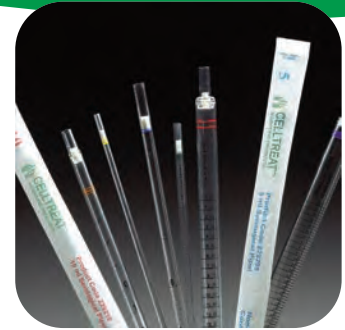
User friendly features are incorporated into the CELLTREAT® product line to improve research efficiency with easier handling and outstanding performance.

## Innovation



The entire CELLTREAT® team is committed to quickly translating customer requests for improvements into real product innovations that exceed expectations.

## Value



CELLTREAT® Scientific Products is dedicated to manufacturing high quality products and bringing them to the life science marketplace at significant cost savings versus alternative brands.

## CELLTREAT® Guarantee

CELLTREAT® Scientific Products offers a total satisfaction guarantee. If for any reason you are not satisfied with the product performance or service provided by CELLTREAT® Scientific Products, we will replace or issue a refund for the purchase price of your product.

To request product samples, pricing, or to reach a sales consultant, call 877-345-4620 or email [service@celltreat.com](mailto:service@celltreat.com).



Ph: 877-345-4620 • Fax: 978-425-9255  
Two Shaker Road C200  
Shirley, MA 01463  
[www.celltreat.com](http://www.celltreat.com)

Become a Fan by clicking Like on our Page  
[www.facebook.com/CelltreatScientificProducts](http://www.facebook.com/CelltreatScientificProducts)

